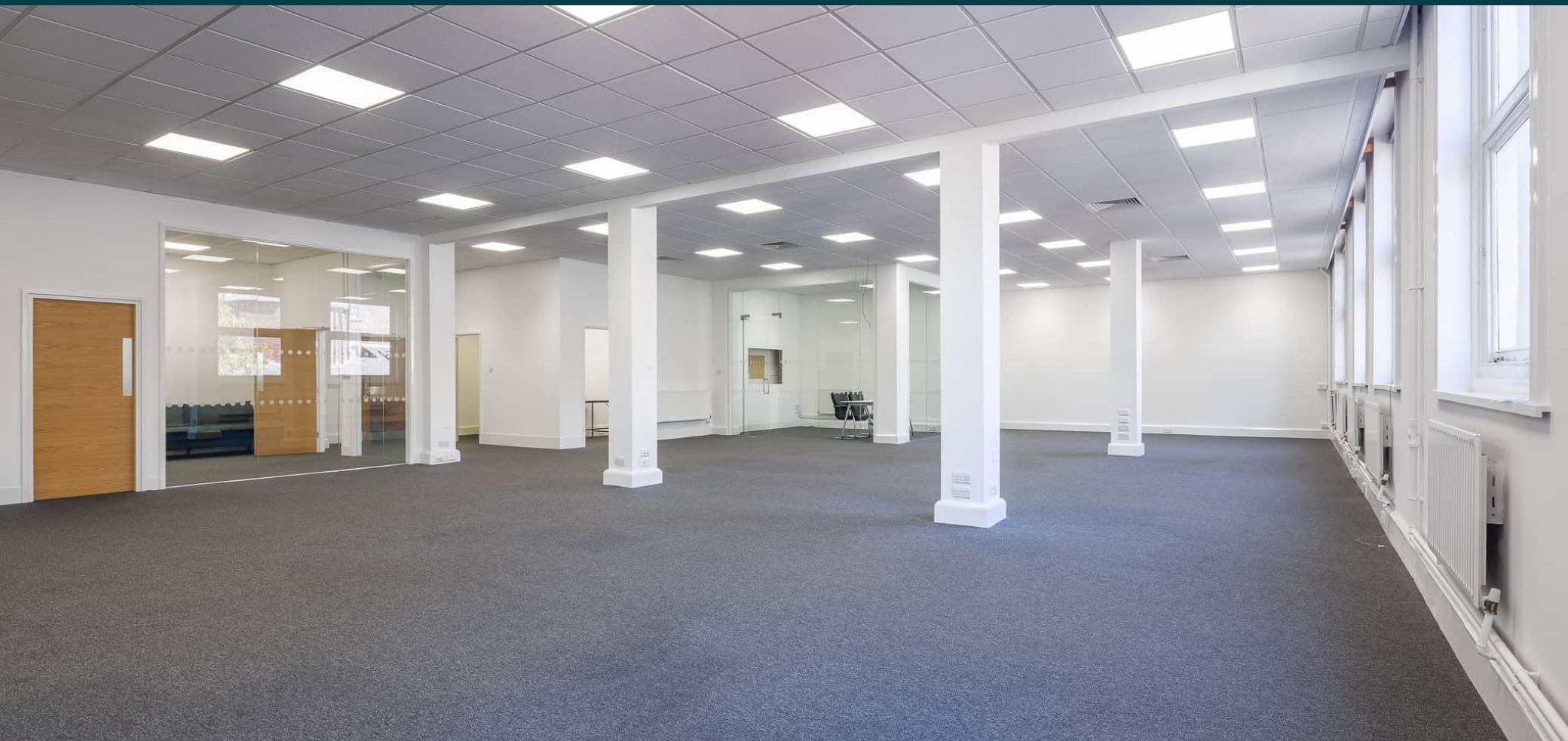




Office Suites C9 & C10

1,965 sq ft & 2,575 sq ft

Joseph's Well, Hanover Walk, LS3 1AB



Where heritage meets modern working



Description

The office suite has recently been refurbished to a high standard providing open plan workspace with two kitchens, two meeting rooms and a storeroom.

They are available individually or combined:

C9 – 1,965 sq ft | approx. 20 desks
C10 – 2,575 sq ft | approx. 22 desks

Together, they form a single suite of 4,540 sq ft | approx. 45 desks

With the benefit of an in-house design and fit out team, we can assist with any further alterations as required.

Get in touch and we'd be happy to arrange a viewing and discuss your requirements.



Contact Us

James Lyons
Pullans
0113 271 7221
james.lyons@pullans.co.uk

James Jackson
Carter Towler
0113 245 1447
jamesjackson@cartertowler.co.uk

Robin Beagley
WSB Property Consultants
0113 234 1444
rbeagley@wsbproperty.co.uk